

# User Management & Drivers (operators, users, drivers)

- User Management
- Password changes and security settings
- Administrator Login
- Operator Login

## User Management

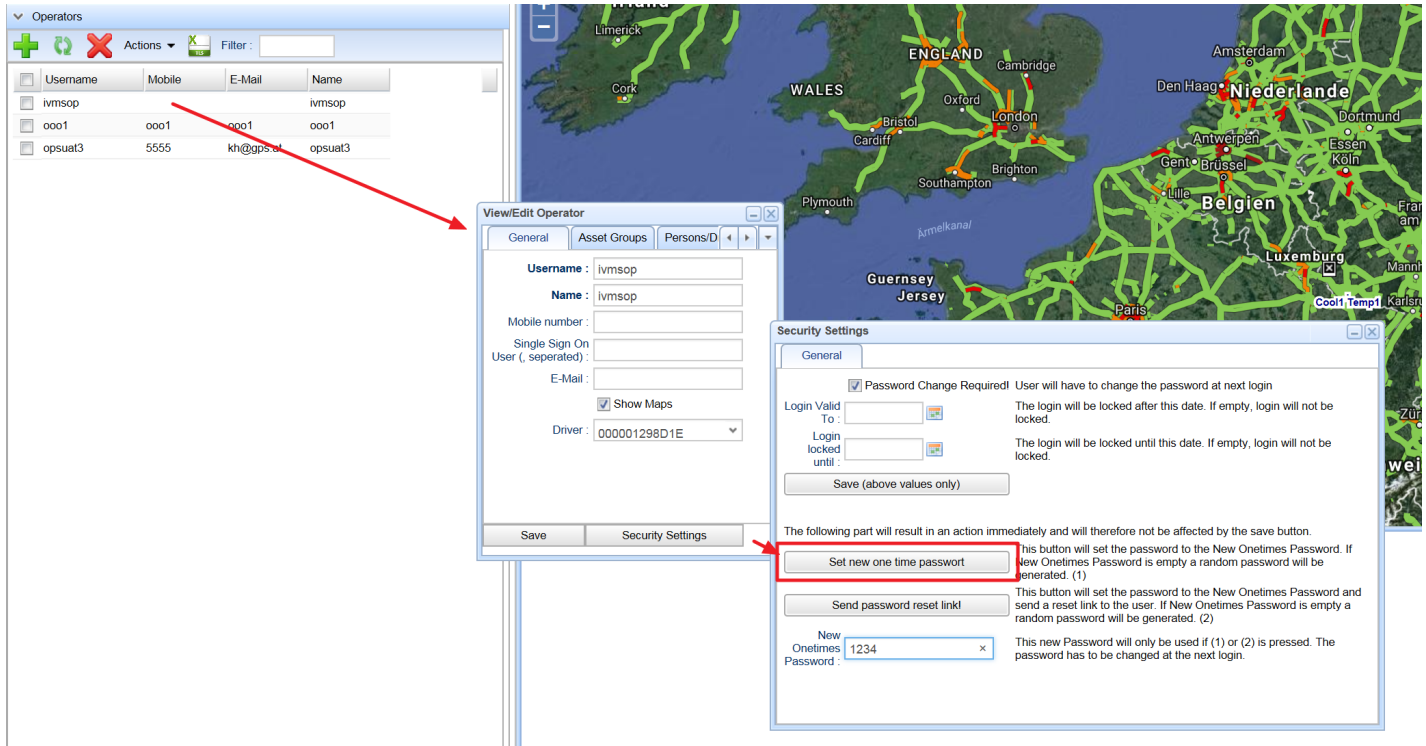
There are different types of users:

- Administrators: adding/deleting managers, users, operators, drivers
- Managers: can see all vehicles and change all configurations
- Users: see all vehicles, but cannot change configurations
- Operators: only see selected vehicles or group of vehicles, cannot change configurations
- Drivers / Persons: assigned to a single vehicle, can only see the own vehicle and edit the logbook

Role	Add/delete users	Change, edit, update settings and geofences	See vehicles	Reports	Logbook Module
<b>Administrator</b>	All	All	All	All	All
<b>Manager</b>	Only users, operators, drivers	All	All	All	All
<b>User</b>	Only operators, drivers	Only view Monitor, Driving Behaviour	All	All	Limited
<b>Operator User</b>	-	Only view Monitor, Driving Behaviour	Only selected vehicles	Only selected vehicles	Limited
<b>Vehicle / Driver login</b>	-	Only Monitor	Only own vehicle	Only own vehicle	Limited

## Password changes and security settings

For all users the password settings can be changed in the software.



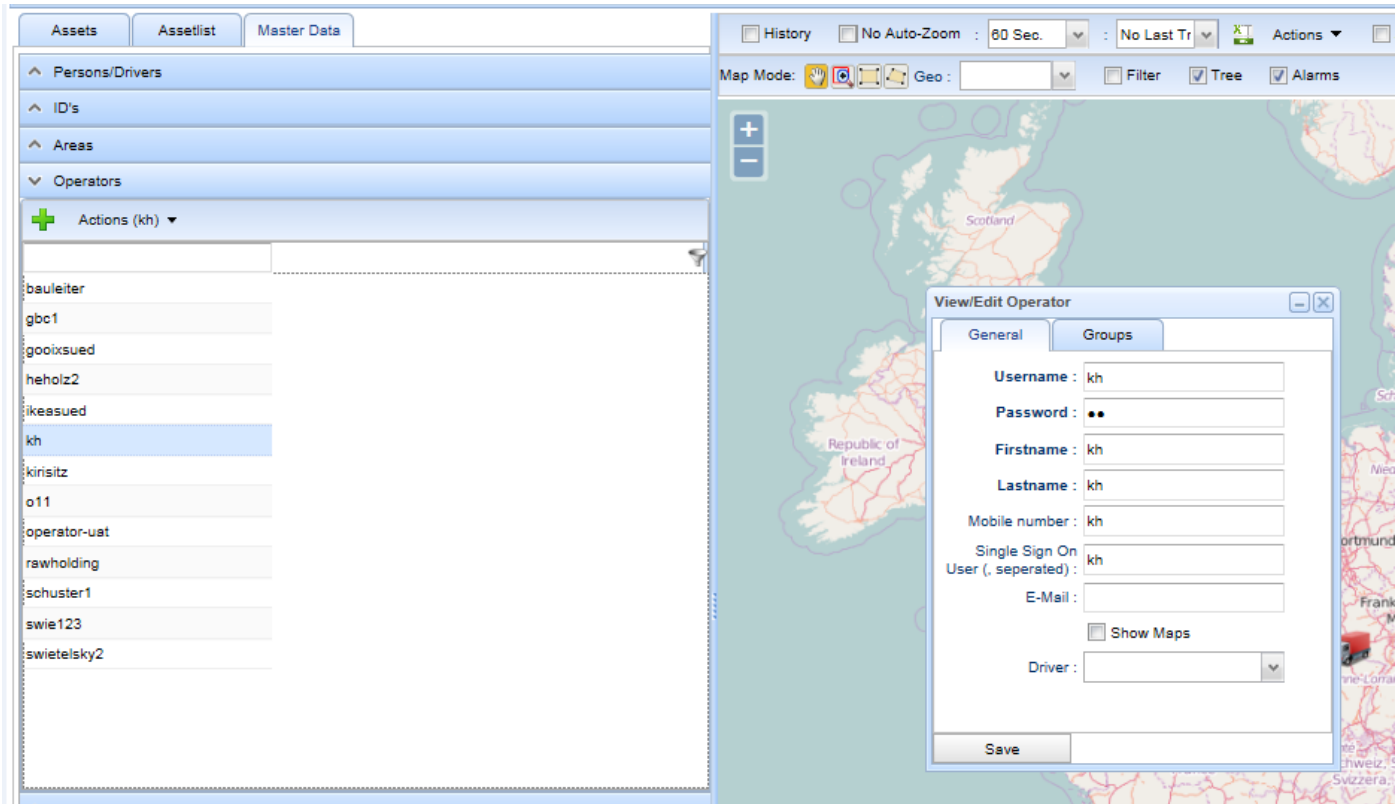
What to do if a user cannot login anymore:

1. Find the user (either manager, operator, user, driver, asset, admin user)
2. Open the SECURITY SETTINGS
3. Enter a new ONE-TIME PASSWORD (e.g. 1234)
4. Click "Set new one time password"
5. If a valid email address is available, you can also click on "Send password reset link" via email

## Administrator Login

You will get the software together with an administrator login. The administrator password can be changed in the options menu.

## Operator Login



Functions and fields	Description
<b>Plus sign (on the left list)</b>	Add new operator, user or manager
<b>1 click on the entry</b>	Action menu for details or deleting the entry
<b>Double click on the entry</b>	Opens the detail menu
<b>Username</b>	For starting the GPS Fleet Software
<b>Only for operators: Groups</b>	Only for operators you can assign groups to the operator that are visible for the operator
Single-Sign-On	To automatically login using Internet Explorer and the current Windows session
Show map	To hide the map